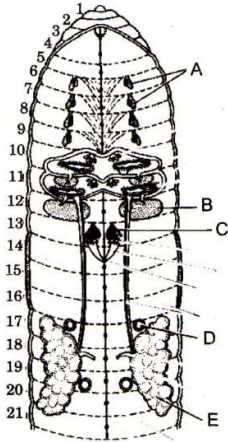




101. The excretory organs in prawn are
a) Kidneys b) Malpighian tubules c) Green glands d) Nephridia
102. The dorsal plate of skeleton found on the abdomen of cockroach is called
a) Pleuron b) Sternum c) Tergum d) Vertex
103. Which of the following does not make a nest of its own?
a) Crow b) Parrot c) Cuckoo d) Sparrow
104. Which of the following statements are true (T) and which are false (F)? Choose the correct option
I. Amphibians have metanephric kidneys
II. The skull of mammals is dicondylic
III. Aves copulate by cloacal apposition
IV. Voice is produced in Aves by a syrinx
V. Lepus is gregarious in nature
a) II, IV and V are true, I and III are false b) II, III and IV are true, I and V are false
c) II and V are true, I, II and V are false d) I, II and V are true, III and IV are false
105. During its life cycle, *Fasciola hepatica* (liver fluke) infects its intermediate host and primary host at the following larval stages, respectively
a) Metacercaria and cercaria b) Miracidium and metacercaria
c) Redia and miracidium d) Cercaria and redia
106. From the following fishes, identify the one with a glomerular kidney.
a) *Sphyrna* b) *Tilapia* c) *Cirrhinus* d) *Exocoetus*
107. The scientific name of Asian tiger mosquito is
a) *Aedes aegypti* b) *Aedes albopictus* c) *Aedes* d) *Aedes albolineatus taeniornynchus*
108. The response to external stimulus is quicker and more precise in which of the following symmetry?
a) Radial b) Bilateral c) Spherical d) Biradial
109. Unique features of phylum-Ctenophora is
a) Presence of comb plates and comb jellies b) Presence of comb plates only
c) Presence of tentacles only d) Alteration of generation only
110. Three types of body cavity are
a) True coelom, pseudocoelom and haemocoel
b) Pseudocoelom, protocoelom and acoelom
c) Acoelom, deuterocoel and homocoel
d) Protocoel, deuterocoel and pseudocoelom
111. Which of the following is a crustacean?
a) Prawn b) Snail c) Sea anemone d) *Hydra*
112. In earthworm, self-fertilization cannot occur due to
a) Protogyny b) Protandry c) Epigyny d) Hypogyny

126. *Ascaris* has
- a) Paired testes and single ovary b) Paired ovaries and single testis
 c) Single ovaries and single testis d) Paired ovaries and paired testes
127. Ampullae of Lorenzini are present in
- a) Fish b) Lizard c) Frog d) Rabbit
128. Which of the following is colourless *Hydra*?
- a) *Hydra fusca* b) *Hydra viridis* c) *Hydra oligactis* d) *Hydra vulgaris*
129. In which of the following organisms testes descend into scrotum in breeding season but in non-breeding season goes up?
- a) Frog b) Kangaroo c) Shrew d) Bat
130. Correct sequent in embryonic development of frog is
- a) Zygote – Cleavage – Blastula – Gastrula b) Zygote – Cleavage – Gastrula – Blastula
 c) Cleavage – Zygote – Blastula – Gastrula d) Zygote – Blastula – Cleavage – Gastrula
131. Larva of *Sycon* is
- a) Parenchymula b) Amphiblastula c) Redia d) Trochophore
132. Sea horse is
- a) A bird b) A mammal c) An amphibian d) A fish
133. Feeding type of animals belonging to phylum-Porifera is
- a) Raptorial feeders b) Suctorial feeders c) Filter feeders d) None of these
134. Which worm may go very deep in soil up to 60-90 cm and form vertical and complicated burrows for their movement?
- a) Epigenic b) Endogenic c) Anecic d) Geophagic
135. Which of the following animal is called a living fossil?
- a) King locust b) *Limulus* c) *Bombyx* d) *Balanoglossus*
136. Which of the following group will be amniotes?
- a) *Hermidactylus* – *Salamander* – *Manis* b) *Ornithorhynchus* – *Struthio* – *Necturus*
 c) *Anguis* – *Eudynamis* – *Pteropuss* d) None of the above
137. The character that differentiates chordate from non-chordate is
- a) Triploblastic body organization b) Heterotrophic mode of nutrition
 c) Dorsal tubular nerve cord d) Sexual reproduction
138. Cavity of coelenterates is called
- a) Coelenterons b) Coelom c) Cavity d) None of these
139. Which one of the following pairs of animal comprises 'jawless fishes'?
- a) Lampreys and eels b) Mackerals and rohu
 c) Lampreys and hag fishes d) Guppies and hag fishes
140. Consider the following four statements (I-IV) about certain desert animals such as kangaroo rat.
- I. They have dark colour and high rate of reproduction and excrete solid urine.
 II. They do not drink water, breathe at a slow rate to conserve water and have their body covered with thick hairs.
 III. They feed on dry seeds and do not require drinking water.
 IV. They excrete very concentrated urine and do not use water to regulate body temperature.
- Which two of the above statements for such animals are true?
- a) III and IV b) II and III c) III and I d) I and II

- a) 12 b) 15 c) 18 d) 16
157. The organs that assist in sound production in mosquito, is
 a) Hairy appendages b) Mouth parts c) Hemielytra d) Halteres
158. Mollusca is
 a) Triploblastic, Acoelomate b) Triploblastic, coelomate
 c) Diploblastic, Acoelomate d) Diploblastic, coelomate
159. Tube feet is the locomotory organ in
 a) Star fish b) Jelly fish c) Silver fish d) Scoliodon
160. In the diagram of the reproductive system of earthworm A, B, C, D and E represents.



- a) **A-Seminal vesicle, B-Spermathecae, C-Prostate gland, D-Ovary, E-Accessory gland**
 b) **A- Seminal vesicle, B- Ovary, C- Accessory gland D- Spermathecae, E- Prostate gland,**
 c) **A- Spermathecae, B- Seminal vesicle, C- Accessory gland D- Ovary, E- Prostate gland,**
 d) **A- Spermathecae, B- Seminal vesicle, C- Ovary, D- Accessory gland E- Prostate gland,**
161. Solenocytes are associated with
 a) Respiration b) Digestion c) Nutrition d) Excretion
162. The study of snakes is called
 a) Herpetology b) Ophiology c) Saurology d) Ornithology
163. Among the following which one lay eggs and does not produce young ones directly?
 a) *Echidna* b) Kangaroo c) Polcapine d) Whale
164. Egg of cockroach gives rise to
 a) Nymph b) Caterpillar c) Larva d) Pupa
165. Choose the correct option
 a) Annelida – Exhibit bilateral symmetry, metamerism and coelom b) Echinodermata – Exhibit tissue level organisation and radial symmetry
 c) Arthropoda – Exhibit incomplete digestive system and segmentation d) Notochord is present on ventral side in vertebrate
166. The animals belonging to phylum-Annelida use the following in locomotion
 a) Nephridia and nephridial pores b) Longitudinal and circular muscles
 c) Organs of bursa d) Spicules and ostia
167. Choanocyte in an ascon type of canal system, is lined by
 a) Porocyte b) Incurrent c) Apopyle d) Spongocoel
168. The zoological name of North Indian hare is
 a) *Oryctolagus cuniculus* b) *Lipus ruficaudatus*

c) Excretory system

d) Reproductive system



Amaze Classes

NEXT LEVEL LEARNING